

St Olaf Lutheran Church
239 North 11th Street
Fort Dodge, IA 50501

Nonprofit Org
U.S. Postage PAID
Permit #434
Fort Dodge, IA

To:

The Visitor Newsletter

May 2024



**Mission Statement: We at Saint Olaf Lutheran Church exist to
Worship, Proclaim, Serve God and Teach His Word.**

***Deadline for the articles for the visitor
newsletter is the 15th of every month.***

Worship Schedule

Sundays

9 am Traditional
10 am Fellowship
11 am Contemporary

Wednesdays

6 pm

Sunday services live streamed
on our Facebook page:
St. Olaf Lutheran Church, ELCA
and
www.stolaffd.com

10:30 am 1400 KVFD AM

Office Hours

Mon - Thurs
8:30 - 4:30 PM

Note From The Pastor



“Let the children come to me, and do not stop them, for it is to such as these that the kingdom of heaven belongs.” –Matthew 19:14

On April 7th our pews were overflowing with 190+ people in worship. The comments afterwards were, *“Don’t you wish every Sunday were like that?”* I do and I pray for that for St. Olaf. I hope that you do too! We had a delicious lunch immediately following worship and a busy Open House. Many people were welcomed in and invited to take a tour of our new facility. The Messenger interviewed our church and wrote an article that was featured on April 8th. The article is included below. Our daycare will have opened (April 22nd by the time you read this newsletter. Thanks be to God! We thank our Lord for the many blessings that have been given to us! We have a church to call home and, in my eyes,—that makes us incredibly blessed. Please join me in a word of prayer from our daycare dedication Sunday.

We give you thanks, O God, creator of the universe, for your abundant gifts. By your holy wisdom all things have been made to reflect your glory, for the sustenance of life, and for the use and delight of your living creatures. Send your blessing upon us and upon our new daycare center—Kingdom Kids, which we set apart today to your praise and honor.

May it be a lively place for sound learning and new discovery; and grant that those who teach and those who learn may find you to be the source of all truth; through Jesus Christ, our Savior and Lord, who lives and reigns with you and the Holy Spirit, one God, now and forever.

Amen.

May Almighty God bless us and direct our days and our deeds in peace.

With deepest thanks,
Pastor Emily

Church and staff prepare to welcome Kingdom Kids

St. Olaf child care center nears opening day

LOCAL NEWS

April 8, 2014



Newsphoto photo by: WJF Photo

Cargill has donated \$70,000 toward the establishment of the Kingdom Kids at St. Olaf day-care center. The check was presented Sunday afternoon during an open house at the center located at the corner 100th St. and Luthersville Church, 156 N. 4th St. From left are Sarah Jacobs, from Cargill; Cynthia Brandhoff from Cargill; the Rev. Emily Jensen, church pastor at St. Olaf; Kathy Goodrich, director of the day care center; Deputy Treasurer Bruce Cargill; and Rev. Mikko; Cargill President Judge (left); Cargill facility manager; and Eric Peterson (right) at St. Olaf.

Tables and chairs sized just right for small children are set up in the classrooms, while out in the halls, wooden cribby holes await little jackets and hats.

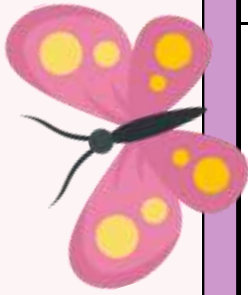
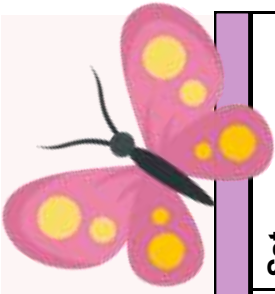
Kingdom Kids at St. Olaf is all set, and if the next round of inspections goes well, it will welcome its first youngsters at the end of this month.

The progress on the newest child care facility in Fort Dodge was celebrated during an open house Sunday afternoon at St. Olaf Lutheran Church, 156 N. 4th St.

During that open house, representatives of Cargill, which has a plant west of Fort Dodge, presented a \$70,000 donation.

That donation is part of the \$2,549,457 raised so far for the center. The goal of the capital campaign is \$3 million.

May 2024



Sun	Mon	Tue	Wed	Thu	Fri	Sat
28	29	30	1	2	3	4
5 9am Traditional Worship 10am Fellowship Hour 11am Contemporary Worship	6 6-7pm AA Meeting Boy Scouts 6:30-8:30pm	7 OLES 9am Boy Scouts 6:00-8:30pm	8 Better Choices 8am IGNITE 5:15-7pm - outside Worship 6pm- blessing of moms/women HS Youth 7-8pm	9 Lifeworks 1pm Daycare ribbon cutting with Greater Growth Alliance @ 4pm	10 Office Closed	11
12 9am Traditional Worship/Senior recognition/Scholarship recipient 10am Fellowship Hour 11am Contemporary Worship	13 Book club @ 1:30pm in Gather Room 6-7pm AA Meeting Boy Scouts 6:30-8:30pm	14 Committees 6pm Council 6:30pm Boy Scouts 6:00-8:30pm	15 Better Choices 8am Last night of Ignite New Member welcome Dinner/worship/Snack Shack HS Youth 7-8pm	16 Lifeworks 1pm	17 Office Closed	18
19 9am Traditional Worship 10am Fellowship Hour 11am Contemporary Worship <i>New member welcome</i>	20 6-7pm AA Meeting Boy Scouts 6:30-8:30pm	21 OLES 9am Boy Scouts 6:00-8:30pm	22 Better Choices 8am	23 Lifeworks 1pm Peace Circle @ 1:30pm	24 Office Closed	25
26 9am Traditional Worship 10am Fellowship Hour 11am Contemporary Worship	27 Office Closed 6-7pm AA Meeting Boy Scouts 6:30-8:30pm	28 Boy Scouts 6:00-8:30pm	29 Better Choices 8am	30 Lifeworks 1pm	31 Office Closed	1

CALENDAR IN MORE DETAIL

May 8

- * Blessing of Women

May 12

- * Senior recognition - only at the 9am service. There will be a coffee and cake reception afterwards.
- * Scholarship recipient recognition at 9am
- * Mothers Day/Blessing of women celebrated at 9am and 11am
- * Noisy offering at 9am and 11am
- * Children singing at 11am

May 15

- * New member welcome at 6pm service
 - * Please contact the office if you'd like to meet with one of our pastors about joining St. Olaf.
- * Last night of Ignite - (Start at St Olaf, ends at Snack Shack)

May 19

- * New member welcome at 9am and 11am
 - * Please contact the office if you'd like to meet with one of our pastors about joining St. Olaf.
- * Pentecost - wear red!



LOOKING AHEAD

June

June 25 - OWLS @ 1:30pm

July

July 7 - ONE service at 10am
4th of July celebration - potluck
after 10am service in Fellowship Hall.
VBS - July 15-19

BOOK CLUB

The May meeting of St. Olaf Book Club will be on Monday, May 13th at 1:30pm in the Gather Room. Our book for the month is "Her Lost Words" by Stephanie Marie Thornton. This book is historical fiction about a mother and daughter who lived unconventional lives. The mother, Mary Wollstonecraft is known as the mother of modern feminism and her daughter, Mary Shelley is the author of Frankenstein.

Books are available for check out at the church. Everyone is welcome to attend.



OLES

OLES meetings are on the first and third Tuesday of the month at 9 a.m. Join them May 7 and 21 for coffee and fellowship. Men of all ages welcome. Please feel free to join them, they only meet twice a month.



SEW SISTERS

We need your help and talents cutting and sewing.



They are in the basement sewing on most Wednesdays from 2:00pm to 4:00pm if you would like to join us.

You may want to call the office to make sure we are there before you come.

CONFIRMATION PROJECT

April 3, our confirmation class went around the outside of the church building to collect trash and sticks. They collected a total of 5 black garbage bags full. Lots of cigarette butts & food wrappers.



BAPTISMAL FONT DONATION

A very special thank you to St. Olaf Lutheran Church for donating this wonderful baptismal font to our church congregation in the Rockwell City Prison. We'll be using it April 4th for our Easter service as we welcome several new men into God's family.



PEACE CIRCLE

The next meeting will be May 23 at 1:30pm in the Fellowship Hall.

Jane Z - leading Sela - refreshments



OWLS

Thank you from the OWLS for all who attended the gathering in March. A special thank you to Viv and Linda C for putting on a wonderful gathering. *Details for the June get together will be coming soon. Keep an eye on the announcements!*



MILITARY PLAQUE

Last call for the military plaques to be made! We will be having them made in June. Call the office or send us the info at office@stolaffd.com.

KINGDOM KIDS

The daycare officially opened on April 22. Thank you to EVERYONE who has donated their time, talent, money, toys, books, blankets etc. to getting the daycare up and running. We truly appreciate you! This could not have happened without each and every one of you.

IGNITE

Ignite has been going very well with mealtime fellowship, worship and classes. Our children sang a couple of songs for the Kingdom Kid's Daycare dedication. Class time has been focusing on the Easter story. We discussed the walk to the cross, Jesus' death and resurrection. Everyone was excited about our craft that helped tell the story. We will be wrapping up our year of classes on May 1st.



On May 8th there will be a grilled meal and fun activities.

On May 15th we will have our final Ignite with a meal, worship and trip to Snack Shack.

All are invited!

St Olaf will pay for everyone to get a small cone.



Easter Craft

St Olaf is in the process of hiring a Director of Youth and Education. Please keep all in your prayers.

ST. OLAF PRAYER SHAWL MINISTRY

We want to send a special thanks to all who have helped in any way to replenish the Prayer Shawl closet with beautiful baptism and adult prayer shawls. This is an ongoing project to encourage and bless others. Thank you for your time and love. May God bless you!

We will not meet at the church in May, but please continue working on your creative projects and turn them into the office when complete. We will bless the shawls, put the number and cross on them, and have them available to bless and encourage others. Thank you!

Anyone interested in finding out more about creating prayer shawls for others is welcome to attend the meeting on June 12. If you'd like to get started sooner, call the office and we can get you in touch with Jane Wallestad. Baptism/Prayer shawls will always be needed!



There is always someone to help you get started to knit or crochet.

All supplies are provided.



St Olaf Prayer Shawl

Join us on June 12, for a special morning gathering at 10am in Room 100. After the gathering, you're invited to join us at Ardys Mae (located across from the movie theater) where lunch will be provided. Your hard work is greatly appreciated!

BAPTISMS



Vincent Larson & Rowan Oester



Liliana Foster-Azua



Thomas Johnson



Rylie Ferrell

DAYCARE



Doug Seltz & Craig Hamilton have been navigating our daycare building project with Wiseman Construction, Allers & Associates Architects, Dencklau Construction & NCIS. *Pictured:* Craig Hamilton, Mitch Fridolfson from North Central Iowa Service, and Doug Seltz.



All of us at St. Olaf are so overjoyed at the outpouring of support from our Fort Dodge community. This generous gift came from Cargill in the amount of \$70,000 for our Kingdom Kids Daycare. Thank you Cargill!



CRIB CREW

Thank you to those who helped setup the cribs for all of the little ones that will be in our daycare! We really appreciate your help!



Give a Gift to LSI: Support Mothers across Iowa

Mother's Day is Sunday, May 12. Did you know LSI brings hope and healing to mothers in each of our service lines? Here are just a few examples:

The Child Care Business Development program in our Immigrant and Refugee Community Services prepares women, often mothers, to run an in-home childcare business. This small business opportunity allows them to provide for their family and ensure their children receive culturally appropriate care.

Many mothers benefit from our Foster Care and Adoption services, whether they be mothers who are blessed with a child through adoption or foster mothers who provide love and guidance to children from all paths of life.

Early Childhood Services prepares mothers-to-be for birth and raising a child. Additionally, home visitation programs help ensure a strong support system for young parents across the state.

These are just three examples of how LSI serves mothers in Iowa. This Mother's Day, we encourage you to give a gift in honor of your mother or motherly figure to ensure mothers around the state receive the care and support they deserve.

Donate online at lsiowa.org/donate or send a check to Lutheran Services in Iowa, PO Box 848, Waverly, IA 50677-0848.

Our Mission: Lutheran Services in Iowa responds to the love of Jesus Christ through compassionate service. LSI is an affiliated social ministry partner of the Iowa congregations of the ELCA (Evangelical Lutheran Church in America) and a member of LSA (Lutheran Services in America). We proudly serve people of all ages, abilities, religions, sexes, gender identities, national origins, ethnicities, races, and sexual orientations. Learn more at LSIowa.org and [Facebook.com/LSI.Iowa](https://www.facebook.com/LSI.Iowa).



Monthly Treasurer's Report

Operating Balance 2/29/2024.....520,412.84

Receipts:

Offerings.....106,768.26

Misc. Receipts.....735.27

Total Receipts for March.....107,503.53

Disbursements:

Benevolence.....0.00

Pastoral Ministry.....26,826.02

Administration.....840.64

Worship & Music.....820.00

Christian Education.....161.44

Our Church Home.....3,867.56

Congregational Life.....(31.56)

Youth Ministry.....21.40

Social Ministry.....29.80

Stewardship.....377.94

Building Improvements.....138,573.80

Misc. Campaign Expenses.....1,145.89

Loan Repay – Foundation.....1,000.00

Total Disbursements for March.....-173,632.93

Operating Balance 3/31/2024.....454,283.44

PASTORAL ACTS & STATISTICS

WORSHIP

ATTENDANCE

Service Times

Day	Date	9:00	11:00	6:00	WEATHER	Totals
Easter Sunday	3/31	186	146	-	Partly Cloudy	332
Wednesday	4/3	-	-	67		67
Sunday	4/7	190	One	Service	Cloudy, Rainy	190
Wednesday	4/10	-	-	65	-	65
Sunday	4/14	66	56	-	Nice, sunny	122
Wednesday	4/17	-	-	73	-	73
Sunday	4/21	64	58	-	Nice	122

Welcome to the Lord's Family

Vincent Matthew Larson
3/31/2024

Rowan James Oester
3/31/2024

Liliana Luise Foster-A zua
4/7/2024

Thomas James Johnson
4/14/2024

Rylie Nicole Ferrell
4/21/2024



CHURCH STATISTICS

Weddings: 0
Baptisms: 5
Funerals: 0

ST. OLAF FOUNDATION

Spring weather has started to give us flowers and some sunshine and warm days...and a new Daycare center! The St Olaf Kingdom Kids Daycare will be open when you read this, starting a whole new era for St Olaf! Thank you to all of you who, along with the St Olaf Foundation, have contributed to this new era, whether with your wealth or your talents!

You can continue to contribute to this effort by continuing to support the Foundation, St Olaf, or the capital campaign as we move on to the second phase of this project: to make our building more accessible for people with mobility issues. This will include making the current steps and doors on the West side of the Narthex (the one closest to the Fellowship Hall) fully accessible with a covered portico extending to the street, ground level outside doors with automatic openers, and an inside ramp to allow entry while avoiding icy sidewalks and rain. For those who don't need the ramp there will be stairs once you get inside the first set of doors.

The Foundation has supported all these new efforts, as well as approving grants for other worthy projects in our community and I hope you will continue to give your support for these efforts.

Carey Bligard

Foundation Board



JOIN "BY THE BOOK"
EVERY MONDAY FROM 6-7PM
AT ST OLAF LUTHERAN CHURCH
IN THE FIRESIDE ROOM DOWNSTAIRS

ST. OLAF LUTHERAN CHURCH— COUNCIL MEMBERS

Carey Bligard - President

Brady Pearson - Vice President

Pamela Bygness - Treasurer

Amanda Warren - Secretary

Doug Seltz - Property

Chris Dutcher – Youth

Zac Felch - Stewardship

Juli Springer – Long Range Planning

Kim Peimann – Social Concerns

Mason Liska – Youth Rep

Janet Meyne – Music & Worship

Jenni Szalat – Life & Growth

Jessica Mericle - Education

Bev Davis

Monica McCullough

Jim McColley

Emily Sauer-Alvarez

Because of scammers contacting our council members this information will remain private.

Please contact the office if you need contacted by a council member and they will connect you with them.